

Sauter Protector for rear and front linkage

Mission

- counterweight at frontloader operation
- alternatively as front ballast

Variably ballastable

- from 180 kg to 720 kg
- basic body 180 kg
- ballast plate 90kg (max. 6x 90kg possible)

Better perception in traffic night and day

- white end-outline marker lamps to the front, at the side in orange, backwards in red
- reflecting warning foil at both sides according to ECE104
- modern and aesthetic build and advertising medium

Strong 3 point suspension

- can be put down easily, lower side is even
- cat. 1 and cat. 2

Modular build

- all parts are exchangeable
- strong steel sheet construction

Protector

For rear and front linkage cat. 1 and cat. 2
breadth: 1,3m, weight: 180 kg

delivery scope:

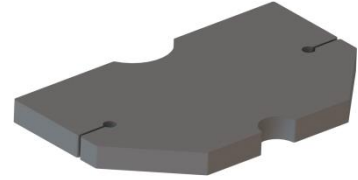
- colour: graphite black RAL 9011, on demand in tractor colour
- application in silver
- reflecting warning foil according to ECE 104



Ballast plate for front protector 90 kg

delivery scope:

- ballast plate 90kg
- max. 6x 90kg for cat. 1 and cat. 2
- colour: graphite black RAL 9011
- fastening elements
- note: up from the 4th ballast plate there is a special mounting and parts necessary with cat.1. Please ask for further information.



Lighting kit cpl. for protector

delivery scope:

- end-outline marker lamps, incl. 7 pol. connector
- Light socket 7 poles
- fastening elements



Toolbox for front protector

delivery scope:

- toolbox made of durable plastic
- colour: black
- fastening elements

technical information:

- maximum weight 360kg
- maximum ballast with two ballast plates



Trailer coupling cpl. for protector

delivery scope:

- Trailer coupling : bolt: $d = 19\text{mm}$ / ball $d = 50\text{mm}$
- colour: black
- fastening elements

Note!

- not for use on public roads
- no approval for road traffic

