

dealer information



SAUTER bumper / front protector L+

front protector L+

for front linkages cat. 2 (fastening to 3-point seat)

characteristics:

- ↗ own weight: 170kg -> variable ballasting up to max. 1.390kg
- ↗ total width, outer lights (245cm - 285cm adjustable)
- ↗ total width, outer sheet metal (230cm - 270cm adjustable)

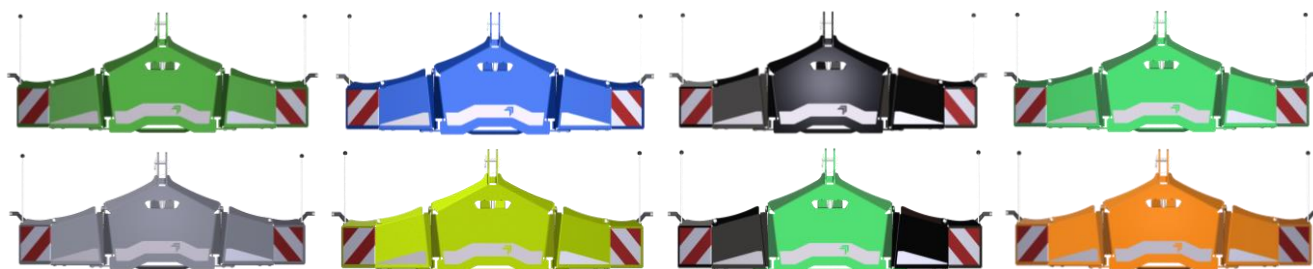
scope of delivery:

- ↗ front protector L+
- ↗ application (sticker)
- ↗ reflective warn foil accord. to ECE 104
- ↗ LED outer lights, incl. 7-pole plug
- ↗ level tabs as maneuvering aid
- ↗ integrated pull mouth (10to. tensile load)



color / coating:

- ↗ **cost-neutral** in standard color RAL3002 (carmine red)
- ↗ **cost-neutral** in diverse tractor colors: e.g. CASE, Claas, John Deere, Massey Ferguson, Fendt, New Holland, SDF (special edition tractor colors or metallic paints excluded)
- ↗ special paintwork / further colors: on request



pictures does show color examples

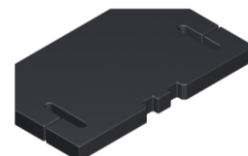
subject to design changes, errors and mistakes excepted !

Hans Sauter GmbH • Auerbachweg 13 • D-87778 Stetten • Tel.: +49 8261 / 75994-0 • Fax: 75994-20
www.sauter-stetten.com • Instagram: [sauter_frontsysteme](https://www.instagram.com/sauter_frontsysteme)

OPTIONS:

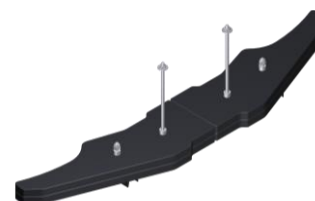
ballast plate 90kg

- ballast plate 90kg (max. 8x 90kg possible)
- color: black RAL 9011
- incl. fastening elements



ground ballast plate 250kg

- ballast plate 250kg (1x possible)
- expandable with additional weight plate to further 250 kg
- color: black RAL 9011
- incl. fastening elements
- height of weight plate incl. U-profile approx. 100mm



additional ballast plate 250kg

- ballast plate 250kg (1x possible)
- ground ballast plate needs to be available already for this expansion
- color: black RAL 9011
- w/o fastening elements
- height of weight plate approx. 50mm



toolbox

- robust plastic toolbox
- color: black
- volume: 50L
- max. ballasting with two 90kg ballast plates plus two 250kg plates (ground and additional ballast plates) possible



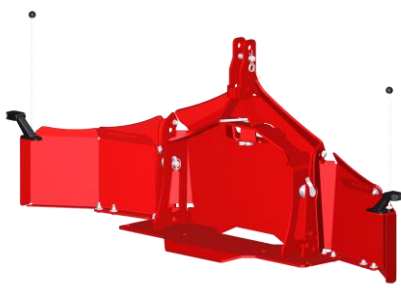
additional catch hook + spindle-adjusted top link

- 2x catch hooks (left / right); color: black RAL 9011
- 1x spindle adjusted top link cat. 2 incl. hardened top link bolt
- Waltscheid catch hook cat. 3L, pluggable by 2 positions (max. 1.200kg / 1.500kg device weight, depending on position)
- spindle adjusted top link M30x3,5 / HL180
- easy & safe transport in „transport position“ possible

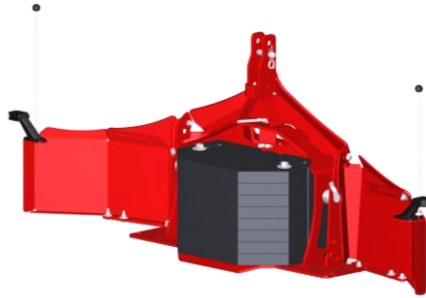


subject to design changes, errors and mistakes excepted !

COMBINATIONS:



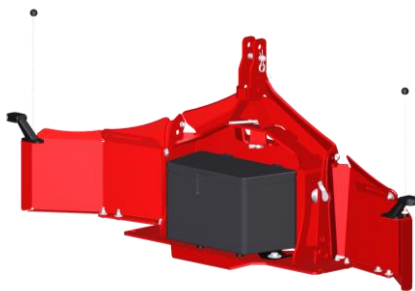
protector L+
(own weight 170kg)



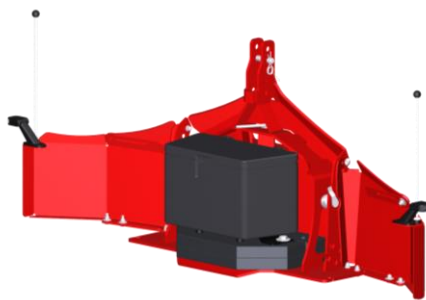
up to 8x weight plates
with 90kg each



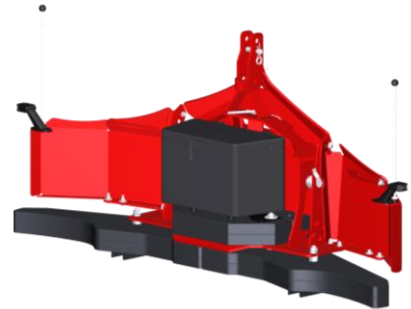
up to 8x weight plates with 90kg each
+ max. 2 weight plates with 250kg each



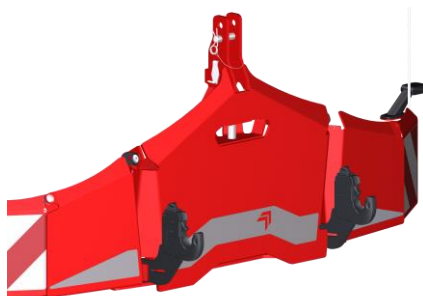
toolbox



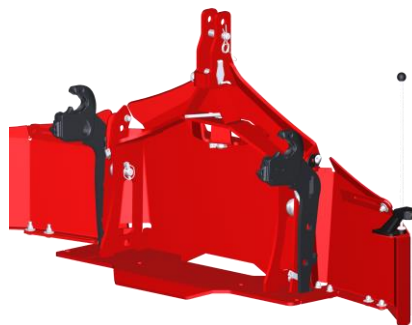
toolbox with ballasting
(2x 90kg weight plates)



toolbox with max. ballasting
(2x 90kg and 2x 250kg weight plates)



catch hooks
(pluggable in 2 positions)



catch hooks
(in transport position)



catch hook & top link
(in use with tractor triangle)

Let us be good examples -
let's make the road a safer place

subject to design changes, errors and mistakes excepted !

Hans Sauter GmbH • Auerbachweg 13 • D-87778 Stetten • Tel.: +49 8261 / 75994-0 • Fax: 75994-20
www.sauter-stetten.com • Instagram: sauter_frontsysteme 

LED outer lights ★ better perception through day & night ★ level tabs as maneuvering aid ★
integrated pull mouth ★ easy assembly ★ stepless adjustable



Increased safety at road traffic ★ reflective warning foil (accord. to ECE104) ★ modular steel construction ★ usable as advertising space ★ fastening via 3-point seat (cat. 2)

SAUTER

subject to design changes, errors and mistakes excepted !

Hans Sauter GmbH • Auerbachweg 13 • D-87778 Stetten • Tel.: +49 8261 / 75994-0 • Fax: 75994-20
www.sauter-stetten.com • Instagram: sauter_frontsysteme 